

Data sheet

zu-1286

Sheet-material stand (without tubular support)



12
years
warranty

External dimensions:

Width:	1310 mm	Construction:	steel, fixed welded
Depth:	800 mm	Colour:	RAL 5010 gentian blue / powder-coated
Height:	75 mm	Weight:	33,5 kg
		Load capacity:	1200 kg

Loading surface: (w/d)

Material:	wood-based board / finish beech
Bottom:	1200 mm x 800 mm
Loading height:	75 mm
Row of sockets:	7 plug-in options

Feets: 4 pc(s) feets made of steel

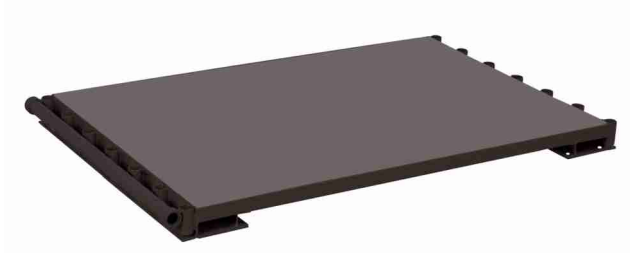
EAN-No. 4035694004849
Customs tariff no. 87168000
Country of origin: European Community



Data sheet

zu-1286/AG

Sheet-material stand (without tubular support) , RAL 7016



External dimensions:

Width:	1310 mm	Construction:	steel, fixed welded
Depth:	800 mm	Colour:	RAL 7016 anthracite grey / powder-coated
Height:	75 mm	Weight:	33,5 kg
		Load capacity:	1200 kg

Loading surface: (w/d)

Material:	wood-based board / dark grey
Bottom:	1200 mm x 800 mm
Loading height:	75 mm
Row of sockets:	7 plug-in options

Feets: 4 pc(s) feets made of steel

EAN-No. 4035694076754
Customs tariff no. 87169090
Country of origin: European Community

